

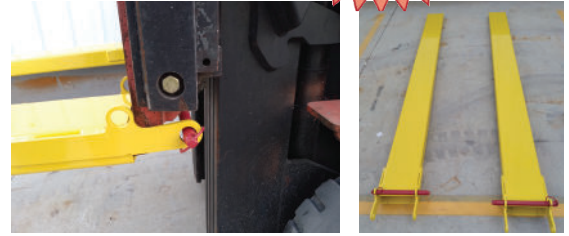


# Heavy Duty Fork Extensions



Offering 2 different grades to best fit your unique lifting needs.

- OSHA requires that extensions do not exceed the length of the forks by more than 50%.
- All extensions are made of high strength steel to provide support needed to lift large heavy objects.
- An industrial 2-part painted finish is included to diminish scrapes or chipping during use and for added toughness.
- Sold in pairs.



## High Strength (Channel Plus™) Fork Extensions

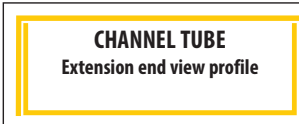
Item	Length	Fits Fork Width	Inside Height	Inside Width	Metal Thickness	Wt./Lbs. Pair	Price
FEP472	72"	4"	2"	4 1/2"	3/16"	83	\$627
FEP572 QS	72"	5"	2"	5 1/2"	3/16"	91	\$677
FEP672	72"	6"	2 1/2"	6 1/2"	3/16"	106	\$797
FEP584 QS	84"	5"	2"	5 1/2"	3/16"	105	\$767
FEP596	96"	5"	2"	5 1/2"	3/16"	120	\$877



The (Channel Plus™ design) is approximately 40% stronger than standard fork extensions. Designed to drive into them and insert the retaining pin. No heavy lifting needed. Extensions are tapered, full length for easy load exit.

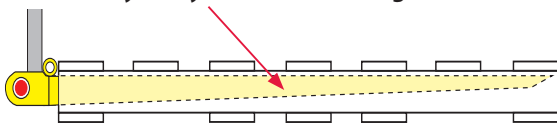
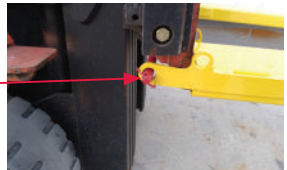
## Extra High Strength (Channel Tube™) Fork Extensions.

Item	Length	Fits Fork Width	Inside Height	Inside Width	Metal Thickness	Wt./Lbs. Pair	Price
FET684 QS	84"	6"	2 1/2"	6 1/2"	3/16"	202	\$1397
FET496	96"	4"	2"	4 1/2"	3/16"	176	\$1237
FET596	96"	5"	2"	4 1/2"	3/16"	194	\$1377
FET696 QS	96"	6"	2 1/2"	6 1/2"	1/4"	309	\$2157
FET896 QS	96"	8"	2"	8 1/2"	1/4"	333	\$2337
FET6108	108"	6"	2 1/2"	6 1/2"	1/4"	346	\$2417
FET8108	108"	8"	3"	8 1/2"	1/4"	427	\$2937
FET6120	120"	6"	2 1/2"	6 1/2"	1/4"	384	\$2687
FET8120	120"	8"	3"	8 1/2"	1/4"	474	\$3297



The (Channel Tube™ design) is for extreme support when lifting large heavy objects. Designed to drive into them and insert the retaining pin. No heavy lifting needed. Extensions are tapered, full length for easy load exit.

### 4 Reasons to Buy SideKick Extensions

- 1. Fork extensions are tapered the full length for easy entry/exit. Less binding.\***  

- 2. Formed and fabricated for a better fit on forks. Stronger and tighter fit than traditional extensions.**
- 3. Locking Pin for secure use.**  
 Channel Plus and Channel Tube only  

- 4. Made from high strength steel. 2 different grades to choose from.**

\* Applies only within the first 12 months of purchase date. Customer must return the damage fork extensions. Customer is responsible for all shipping costs. Applies only once per pair of extensions. Effective 1-24 102-1-24 \*Prices subject to change without notice.



SideKick is a division of Iron Bull Mfg. • 6064 N 350 E • Marshall, IN 47859

**765-597-2480**